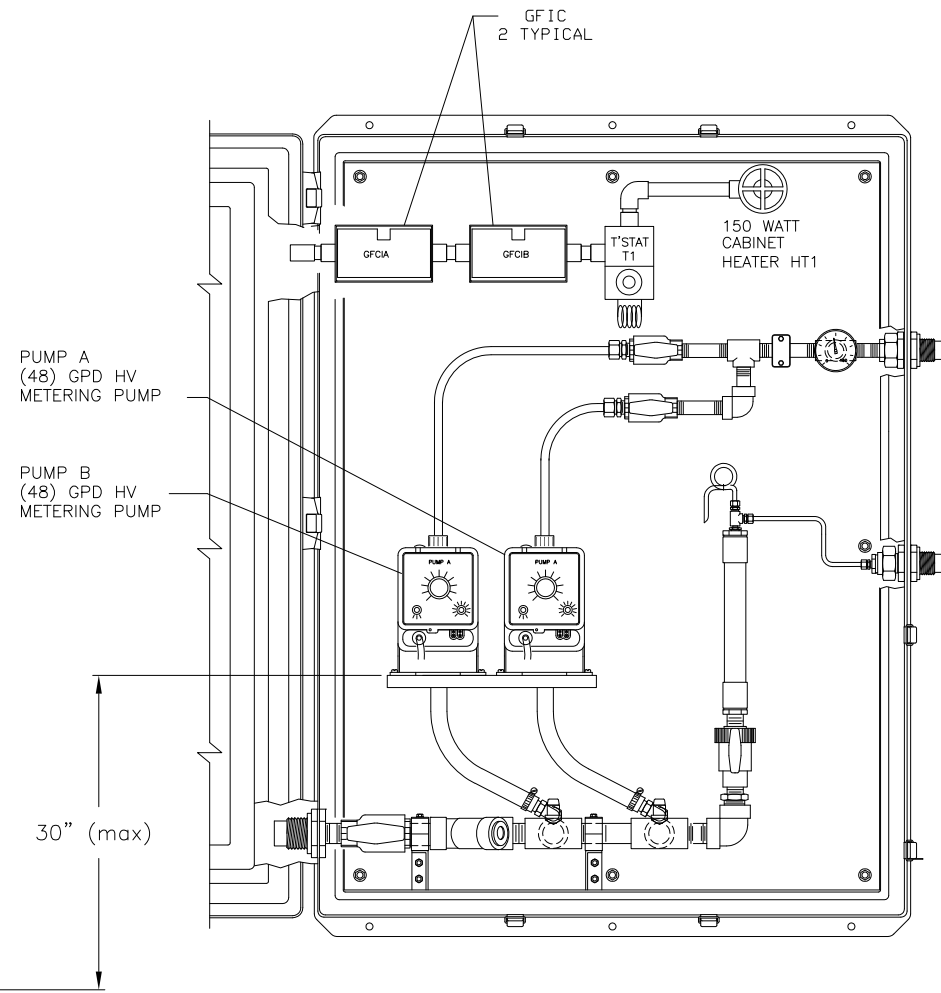
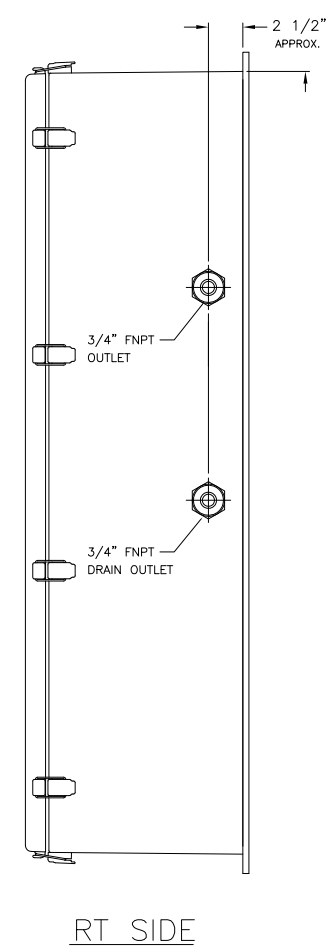


LT SIDE SHOWING STAND

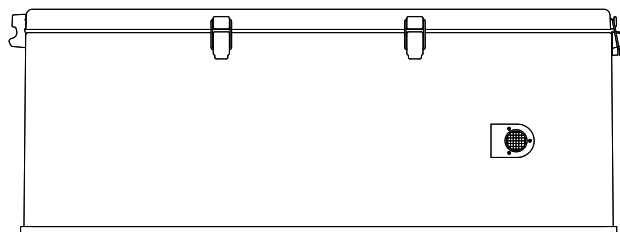
ENCLOSURE W/DOOR & STAND



ENCLOSURE W/DOOR AND STAND REMOVED



RT SIDE



BOTTOM

NOTES:

1. SHIP PUMPS LOOSE TO PREVENT DAMAGE – LMI C111-76HV
2. INSIDE OF ENCLOSURE CORROSIVE ATMOSPHERE. USE NON-METALLIC COMPONENTS (HEATING SYSTEM EXCLUDED).

		GENERAL REVISION	B
		REVISED PER FIELD ENGINEER	A
CHK'D.	DATE	DESCRIPTION	R E L
APP'D.	DATE		

DUPLEX PUMP ENCLOSURE
48 GPD HV PUMPS, HEATED ENCL
GENERAL ARRANGEMENT

NALCO Nalco Company
One Nalco Center
Naperville, Illinois 60563

SCALE	NONE	DATE	RELEASE	B
DRAWN	JRH	9/27/16	DRAWING NO.	20160927-02
CHECKED				(PAGE 1 OF 1)
APPROVED				

PROJ. NO. ---